



## Newsletter #10 October 2009

- 2010 Festival Dates
- Show Week
- Cherry Blossom Notes
- Cup Week
- Naming Rights Sponsor
- New Festival Event
- Website
- New Staff Member
- Books
- Ponder Upon

### 2010 Festival Dates

**Friday 19 February – Sunday 14 March 2010**

Make sure to tell out-of-town friends the dates so they can plan their trip to the Garden City. The next Festival will run for **24 days**, leading into the *Ellerslie International Flower Show* (10-14 March).

### Show Week

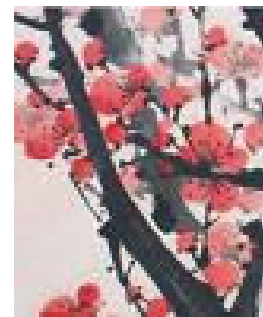
The Festival will have a stall again at the *2009 Royal New Zealand Show* (Wednesday 11 to Friday 13 November) as this has proved very successful in the past. The stall will be in the *Garden NZ* tent (MacFarlane Avenue entrance) between the Baa-Baa Bar and Picnic Lawn.



[[www.marthastewart.com](http://www.marthastewart.com)]

### Cherry Blossom Notes

Make sure when visiting our stall that you take the opportunity to give us your Festival suggestions which can be written on paper flowers and attached to branches.

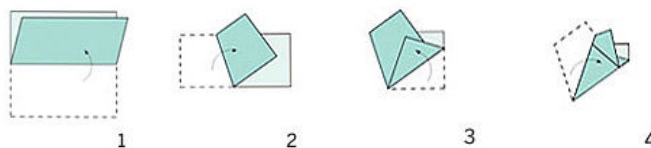


[[www.antiquehelper.com](http://www.antiquehelper.com)]

In the meantime, we thought you might like to try making your own paper cherry blossoms, instructions courtesy of [www.marthastewart.com](http://www.marthastewart.com).

Cherry blossoms are famously ephemeral, but you can have them year-round by embellishing woody branches with the colourful blooms, and using them to decorate a mantel or spruce up handmade gift/party bags.

To create five-petal blossoms, start by cutting pink or red glassine (glossy air and waterproof paper) or vellum (like parchment) into 3 1/2-inch and 4 1/2-inch squares. Fold a square into a flat cone, following steps 1 to 4.



Using scissors, make four angled cuts to remove the top of the cone as in step 5.



5

With a utility knife, carve out a small rectangular sliver on each side of the cone. Snip off a tiny bit of the pointed tip of the cone, and unfold and shape the paper to yield a blossom. Collect branches and poke their tips through the centres of the blossoms. Place the decorated branches in a tall vase filled with pebbles to anchor the display. Blossoms can also be utilised to decorate your own gift or party bags.

### Cup Week

The Festival will be decorating entrances at both Addington Raceway and Riccarton Park throughout Cup Week (6-14 November) in collaboration with Festival of Flowers sponsor *Oderings Nurseries (Christchurch) Ltd.*



### Naming Rights Sponsor

The Christchurch Garden City Trust is most appreciative and pleased to announce that Funeral Directors John Rhind have recently become the Festival's newest naming rights sponsor. They are now the official supporters of the Cathedral music programme that will be known as *John Rhind Chords in the Cathedral*. Just a reminder again of the dates for the combined music programme and Floral Carpet viewing — note that this event will run for **10 days** from Friday 19 February until Sunday 28 February 2010.

### New Festival Event

*Eyes Spy* is a new 'treasure hunt' style event for children, families, and visitors to our city, in the form of a walk/animal hunt in the Native Bush area of the Christchurch Botanic Gardens. Eye-direction signs, at child-friendly height, will reveal hidden birds and insects along the way. These clues will encourage children to look around bushes, up trees and on the ground in their quest to unearth hidden creatures. Live storytelling of New Zealand stories by Garden Club members will guarantee a popular and educational diversion for all diminutive 'animal hunters.'



[Artist Mark Dimock's Site  
[www.bumpkin.co.nz](http://www.bumpkin.co.nz)]

### Website

We recently learned about a great interactive gardening site. MyGarden.co.nz is a tool that facilitates dialogue, learning, and community between people, their gardens and their produce. It is aimed at a wide spectrum of gardeners from those with a budding interest in gardening to those with comprehensive expertise in many areas of growing and cultivation.

Register to become a member and then showcase your own gardens, produce, skills and ideas and share these with other members by uploading photos and videos, publishing blogs, interacting in **forum discussions**, and exchanging recipes like the very tasty-sounding 'Quick Radish Curry' or 'Silverbeet & Pistachio Quiche'.



### New Staff Member

The Christchurch Garden City Trust recently approved the appointment of an Event Officer for the Festival office until the end of March 2010. Jane Shannahan completed the CPIT Event Management course in 2005 and has worked in events (on and off) since 1979, including the conference industry in London for several years. Jane recently returned from living in Maldives where she was a Marketing Executive for resorts. Previously she has worked with the *Festival of Flowers & Romance* and the *Christchurch Arts Festival*. One of Jane's first tasks has been to compile this newsletter!



### Books

Some new gardening books recently spied to buy or obtain from your local library:

*Edible Garden Planner: Growing Organic Fruit & Vegetables Year-Round*  
Diana Anthony and Jon Muller

*The New Zealand Plant Doctor: Answers to Your Gardening Problems*  
Andrew Maloy

*The Tui NZ Vegetable Garden: the Complete Guide to Growing Vegetables in New Zealand*  
Sally Cameron

### Ponder Upon



*I wandered lonely as a cloud  
When all at once I saw a crowd,  
That floats on high o'er vales and hills,  
A host of golden daffodils.*  
William Wordsworth

*Where flowers bloom so does hope.*  
Lady Bird Johnson

*What grows in the garden,  
so lovely and rare?  
roses and dahlias,  
and people grow there.*  
From TV's 'A Gardener's Diary.'

[[playintraffic.wordpress.com](http://playintraffic.wordpress.com)]

**Burst! 2010 Festival of Flowers**  
Friday 19 February – Sunday 14 March

[www.festivalofflowers.co.nz](http://www.festivalofflowers.co.nz)

Newsletter created by Christchurch Garden City Trust, PO Box 2067,  
Christchurch 8140, P (64 3) 365-5403, F (64 3) 366-2767, E [festival.flowers@xtra.co.nz](mailto:festival.flowers@xtra.co.nz)

If you wish to unsubscribe from this newsletter, please reply to [festival.flowers@xtra.co.nz](mailto:festival.flowers@xtra.co.nz)  
with "unsubscribe" in the subject line.

